
Fiber Laser Marking - PRO



LC-MARK PRO by 

Company

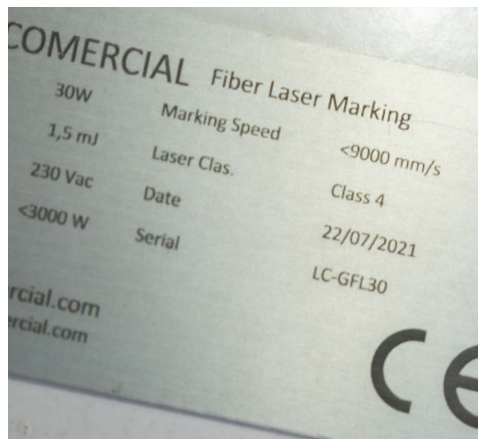
LC is a leader in laser technology, we develop all kinds of solutions for industries and businesses.

We have a qualified team with great experience in laser and eco-efficient technologies.

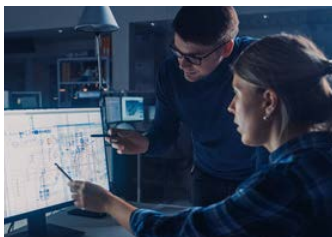
We are a company committed to industrial productivity, energy efficiency and taking care of the environment.

Our biggest goal is to make laser technology accessible worldwide, we want to share our knowledge and make the job as easy as possible.





Manufacturing Laser Technology



Analysis

Day by day we work to give our clients the best service. We want that every laser equipment to be the most suitable for every case. LC is committed to offer the best option in the laser technology world, we will advise you so you can make the perfect decision. We offer 100% personalized solutions to each client.



Production

LC produces laser equipment in our facilities, providing a faster, more efficient and higher quality service. Thanks to our production system we can guarantee every detail is perfect and our machines are ready to use.



Quality

Our components are top from brands so that your laser equipment works 100% from the first moment. We work with a rigorous system to improve controls and ensure the best performance of the equipment.



After-sales service

We offer a comprehensive 2.0 after-sales service, with phone attention, mail and videocall assistance. We have qualified technicians who provide training online and face-to-face, in addition to offering a technical service thoroughfull and fast. We aim to offer the fastest and most effective solution as possible.



Our machines incorporate a Fiber laser and a "Galvo" control technology that allowing marking all types of metals and plastics at a good speed. Laser marking reaches incredible results and speeds thanks to Galvo technology. Unlike CNC technology, the laser head does not have to be positioned at the point where we want to mark. In this case, two mirrors are located at a greater distance from the material are used, which rotate quickly and reach the positions more quickly. This technology allows the head to remain fixed. A laser marking equipment uses this technology to make its engravings and different types of lasers can be incorporated depending on the material that we want to work with.

Laser type and technology



1 Fast markings and engravings

2 High quality and speed

3 Precision to perform complex and small details

4 Multiple choice in code system: Data matrix, QR, bars, reading codes

Fiber laser marking machines are created to mark different materials. The LC-MARK PRO model is our last generation marking equipment designed to be integrated into production lines and productivity chains.

This laser equipment is easy to integrate into a production line, it has small and maneuverable heads; adaptable to each case and each industry. Integration in the production line is efficient and effective after a few hours of installation with an efficient training to the operator who must use the machine.

The laser equipment has different types of connection and integrated software for easy operation. LC-MARK PRO offers different code

marking options: Data Matrix, QR codes and barcodes or reading codes. In addition, texts, images, and different designs can also be marked and engraved at high speed.

They are low-volume laser equipment, compared to other types of laser machines, this means that they are more portable and practical.

LC offers a short-term solution adapting to the specifications of each client.



Laser fiber marking for production lines

Compact and complete laser marking machine. Model MANUFACTURED EXCLUSIVELY by LC. Easy and maneuverable system for integration in production lines.

Perfect for all kinds of applications such as steel, brass, silver, gold and different plastics.

LC-MARK PRO machine is a laser marking model for professional applications in production lines.

- Allows great speed of work.
- Maneuverable and adaptable to each specific case
- Good resolution of details and better finishes.
- High quality fiber laser.

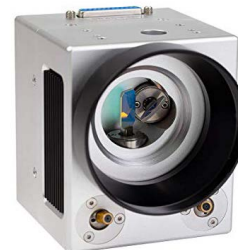


High quality laser



High-end laser. The best quality at the best price.

Galvo Head



Mirror system that allows a fast and reliable laser marking.

Opening with key



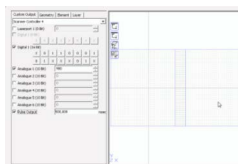
Opening system with security key to start the machine.

Control buttons



Integrated control buttons.

Software



Easy and intuitive software. It has a graphic editor or if you prefer, import your files from other programs.



- Smart interface, automated processes with integrated control.
- Full machine integration and automation possibilities through a process control solution that can integrate full-featured laser marking projects

Different marking possibilities

Lines, circles, triangles, codes, images. Also dynamic designs such as serial numbers, dates and times, combined with barcodes or text.

Maneuverable head

512 MByte of RAM DDR3, CPU of 1 GHz clock

4 digital inputs and 4 isolated digital outputs

Encoder input

Fast online switching between up to 16 grid correction tables

Stand Alone function

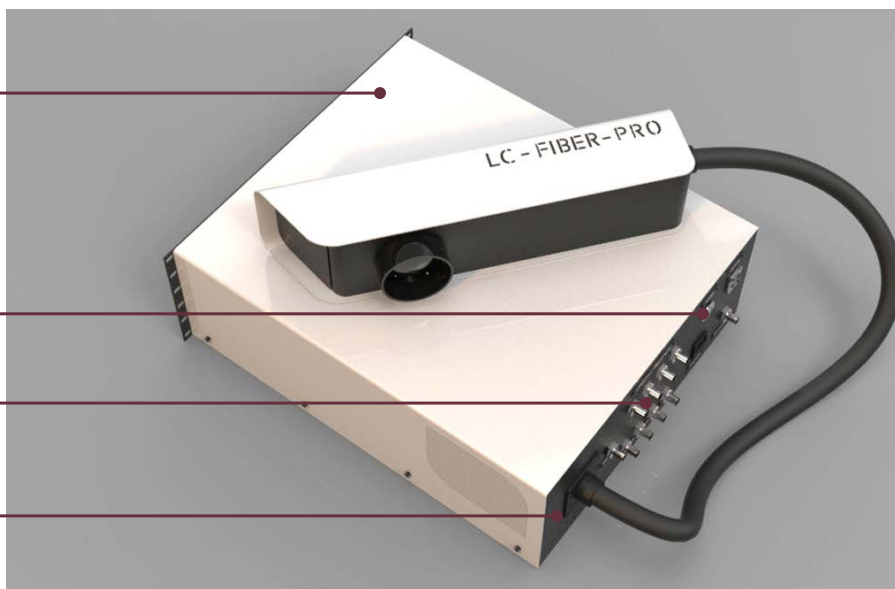


Drive shaft

Support for Micro-SD and Micro-SDHC cards with up to 32 GB of space

Encoder input

100 Mbit Ethernet connection and USB connection



LC-MARK PRO

20W, 30W, 50W

About LC-MARK PRO

Efficiency and versatility

Laser project cutting into smaller parts that fit the workspace and automated processing with integrated control of motion drives.

Variety

Multi-head support with up to nine independent heads.

It works with different controllers.

Practical and complete software

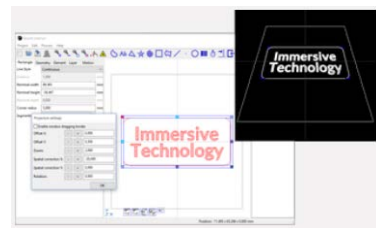
Shortcut editor menu to define your own custom shortcuts for all menu items.

Edition of static and dynamic shapes, and the possibility of filling or shading freely defined and combined elements.

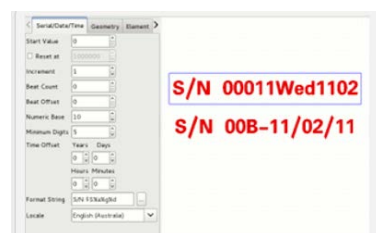
Repeated processing of vector laser data with integrated motion control (one-way, rotational, or X-Y tables).

CAD and WYSIWYG capabilities of the laser project editor.

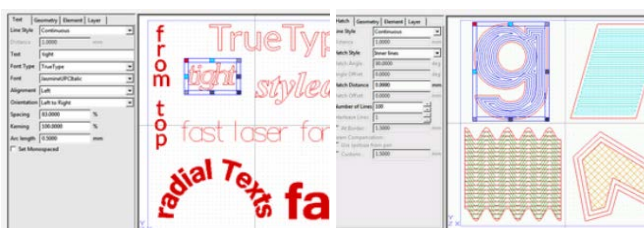
Software available for Windows™ & Linux™.



Immersive preview



Marking of serial numbers and dates on the production line



Different types of fills for geometric shapes and many possibilities for text markup and styles

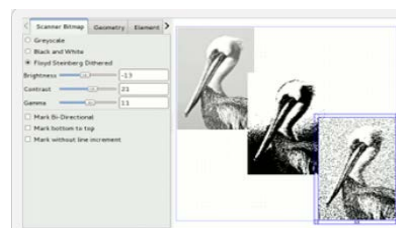


Image marking. Import in different formats



Materials



Table of materials

	ENGRAVING	CUTTING	MARKING
Stainless steel	✓	-	✓
Carbon steel	✓	-	✓
Aluminum	✓	-	✓
Copper	✓	-	✓
Prayed	✓	50W	✓
Silver	✓	50W	✓
Acrylic painted	✓	-	✓
Spray on Glass	✓	-	✓
PVC	✓	-	✓
ABS	✓	-	✓
Other plastics	✓	-	✓

1
Easy integration in the production line

2
Traceability management system

3
Easy and intuitive

Applications and Industry

Laser marking equipment has countless applications in many industries. Implement internal references, barcodes, QR codes, expiration or production dates, among other options, in your products. These machines are perfect in sectors such as food, machining or the automotive industry.

They allow you to customize elements. Through laser marking you can achieve incredible results and in a very fast way to better attract the attention of your customers. You can implement images, letters, vectors and many other types of documents or designs.



Technical information

	20W	30W	50W
Work area	100x100	200x200	300x300
Wavelength	1064nm		
Beam quality	M2<1.3		
Output power	10%-100% (allows adjustments)		
Output frequency	1KHz - 400KHz		
Power stability	<±1%rms		
Focus spot diameter	<0.01mm		
recorded range	≤400*400mm (customized)		
Engraving depth	<1.2mm		
Engraving speed	800 standars characters /second		
Minimum line width	0.012mm		
Minimum character	0.1mm		
Repetition accuracy			
Operating system	Windows 7 / Windows 10		
Cooling mode	Air refrigerated		
Room temperature	10°C~33°C		
Ambient humidity	20%~90%		
Electrical parameters	220V/Singlephase/50Hz/<2000W		
Laser life time	100 000 hours		
Host size	400mmx350mmx635mm		







Tomàs Viladomiu, 61
08650 · Sallent
Barcelona (Spain)

T. +34 936 281 426

info@lclasers.com



www.lasercomercial.com

02.04.01_EN_002